

MOXA SoftDVR™ Pro

Expandable and Integratable IP Surveillance Software



MOXA SoftDVR™ Pro IP Surveillance Software is designed for IP Surveillance systems that use MOXA VPort 2100 series Video Servers as the Distributed Video Networking solution. With the help of MOXA SoftDVR™, system integrators can seamlessly integrate other applications, such as I/O Sensors and Alarms, with CCTV Systems over an IP-based network.

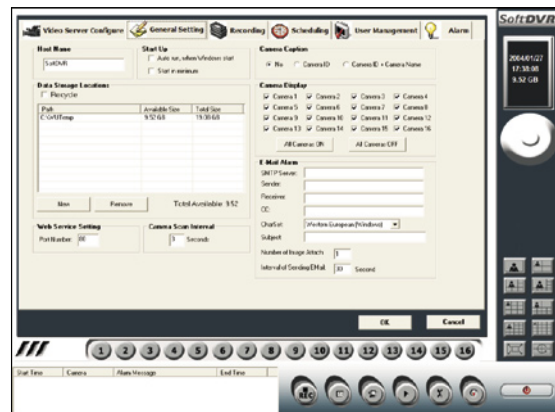
Viewing & playback, anywhere & anytime

- Remote access from popular web browsers
- Supports 1, 4, 6, 8, 9, 10, 13, 16 camera viewing formats
- Maximum of 16 cameras in a system
- Historical playback by time and event
- Zoom-in/Zoom-out function for individual cameras when playing back images
- Take snapshots in playback mode to get JPEG images for printing or to save as evidence
- Can adjust the contrast, brightness, sharpness, blur, and grayscale of the snapshot image



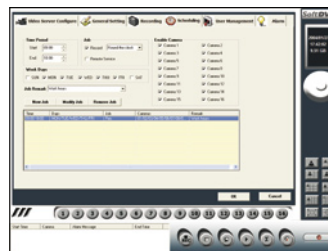
Recording & Storing over the Ethernet/ Internet

- Recording action can be triggered in round-the-clock or event mode
- Record video in AVI format—compatible with popular media players
- Record files in MPEG4 Standard—save an enormous amount of storage space
- Dynamically adjust recording frame rate over the LAN/ Internet to match the real frame transmit speed, to keep the video synchronized with the actual time
- Recyclable override of hard disk space in FIFO (First-In-First-Out) sequence
- Recorded video files can be stored on a local PC or Windows-based networked storage server



❏ Schedule jobs for recording and remote service

- Administrators can set up the time schedule of remote service and the recording action for each camera



❏ Alarm message triggered and sent

- Area-selectable Video Motion Detection (VMD) function for each camera
- Sensitivity tuning for the VMD
- Alarm can be triggered by VMD, video failure, communication failure, system fault, storage failure, storage full, GPI, and then sent by email or GPO, or trigger PTZ camera to a preset position



❏ Video Server Configuration & System Management

- Can configure each camera's name, video quality, and video resolution separately
- Supports PTZ camera controls (Same as VPort 2100 series Video Servers' support list)
- Supports MOXA VPort series Video Servers
- Up to 32 users can be added in a system
- Supports remote firmware upgrade
- Can set up the view and system operation for each user
- Automatically resume viewing and recording after system reboot
- Can review historical system status via system log
- Cameras can be managed easily with your own e-map



❏ Ordering Information

SoftDVR™ Pro: CD with SoftDVR™ Pro software and User's Manual

Items included:

- Key Pro
- MOXA SoftDVR™ Pro Getting Started Guide

❏ System Requirements

- MS Windows 2000/XP
- Intel Pentium IV 2.4 GHz or above
- 256 MB SDRAM or above (512 MB recommended)
- AGP (2X) VGA card with 32 MB of Display Memory or above
- DirectX 8.1 or above

SoftDVR Lite bundled free with VPort 2100 series Video Servers

Differs from SoftDVR Pro in:

- 1- to 4-ch (Quad) viewing format; max. 4 cameras
- No remote service, such as viewing from web browser and storing on a network hardisk
- VMD in full image comparison
- No I/O sensor & alarm management for alarm messages
- System Requirement: MS Windows 2000/XP, Intel Pentium III 1 GHz or above, 128 MB SDRAM or above, AGP (2X) VGA card with 32 MB of Display Memory or above, DirectX 8.1 or above

